

COMBO

ORGANISATION IN THE WORKPLACE

DESIGN COMBO

A modern equipped workplace promises functionality, design, efficiency and comfort. „Combo“ was developed to support these essential characteristics. This sophisticated and elegantly shaped body fully embraces the important tasks of organisation in the workplace. Thus „Combo“ not only increases productivity at work, but brings an elegant piece of organisational talent onto the market with its contemporary design. It meets the requirements of modern and functional office furniture and, as a mobile storage space, brings order and peace into the work system.

In „Combo“ frame and shell merge into a harmonious unit. With a recessed grip, formed from the surrounding frame of the front and rear part, the office system can easily be moved. Like with the other „loop line“ furniture, the body or the shell are available in various materials and colours. Mobility is guaranteed by means of casters which are slightly offset to the rear and they add more lightness to the furniture. The body is fitted with two drawers, whereby the upper one has an

optional compartment for small materials. Both drawers are equipped with the Push-Pull system, which promises a pleasant handling. In the front handle there is the possibility to attach a USB port, to control different devices. This option is intended as a technical extension. So here is the opportunity to synchronise or charge smartphones, tablets, digital cameras, external storage and much more.

In the back an additional compartment is also fitted that can be closed by means of a perforated swing door. This additional module offers free space for adaptive elements, like for example a connector to organise power sockets.

Hooks for cable suspension can also be attached, they prevent the „cable clutter“ that is ever present in the workplace. The „Combo“ body can be locked with a side mounted lock.





RECESSED GRIP - USB

FRAME SERVES AS A HANDLE,
OPTIONAL USB HUB FOR
SMART MEDIA

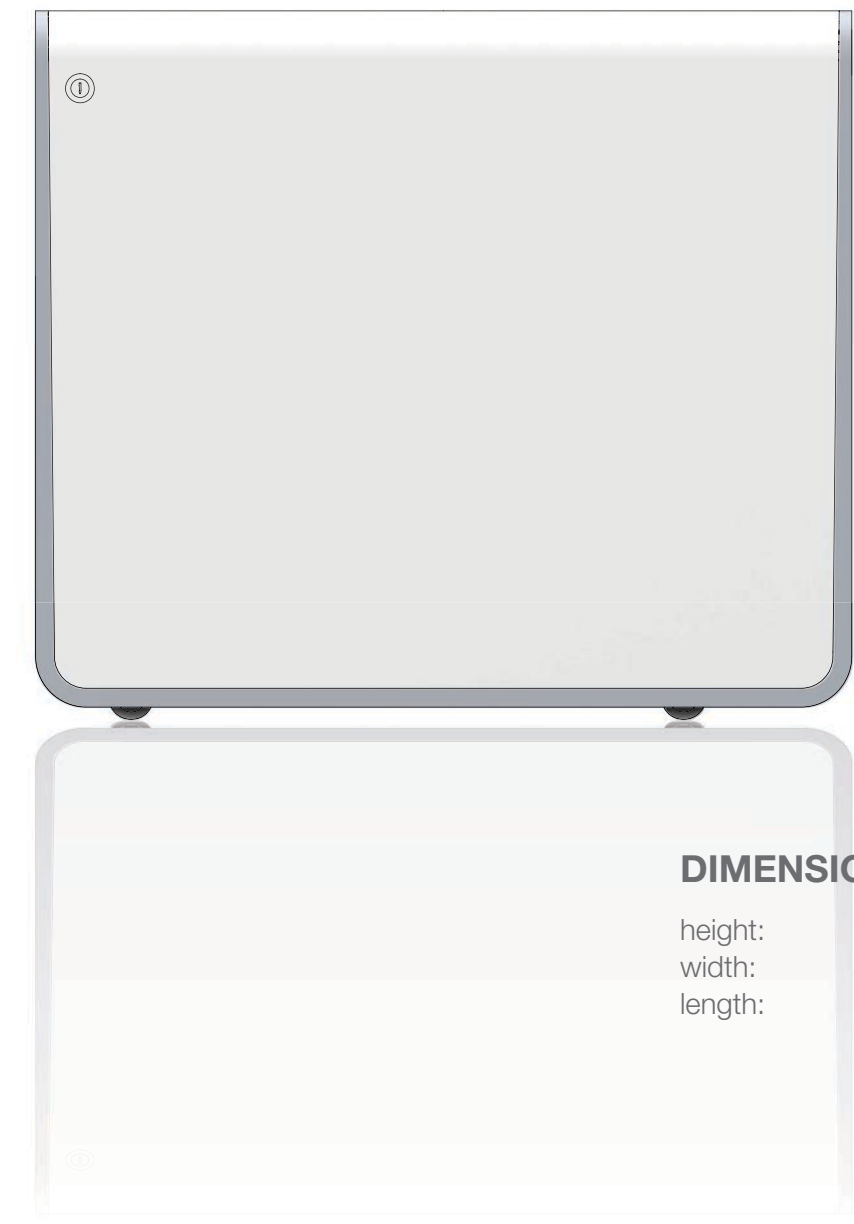


DRAWERS

INTEGRATED PUSH-PULL SYSTEM,
CONVENIENT OPENING AND CLOSING

CASTERS

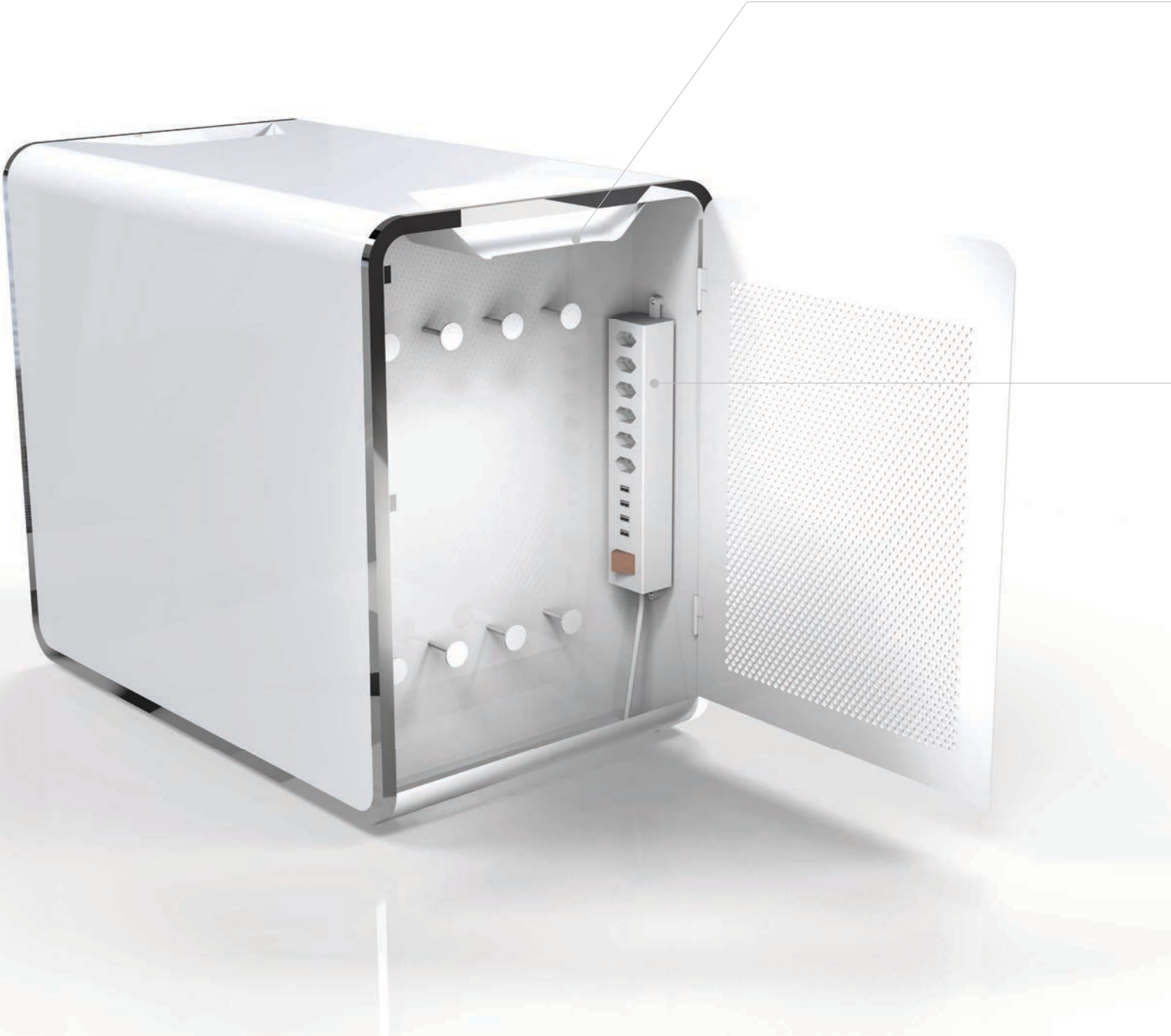
HIDDEN CASTERS PROVIDE MOBILITY



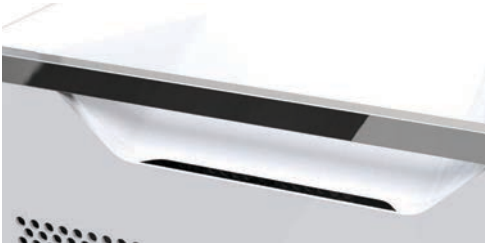
DIMENSIONS

height: 565 mm
width: 400 mm
length: 650 mm

BACK VIEW



GAP
FOR CABLE PLUGGING
AND UNPLUGGING

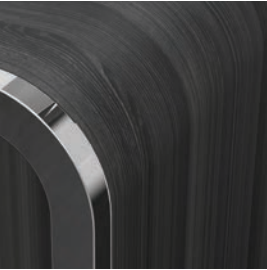


**ADDITIONAL
COMPARTMENT**
SOCKET, HOOK,
CABLE ORGANISATION,
INTEGRATED POWER SUPPLY AND
DATA TRANSMISSION (USB)

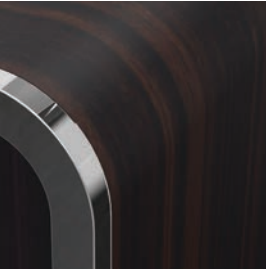


VERSIONS

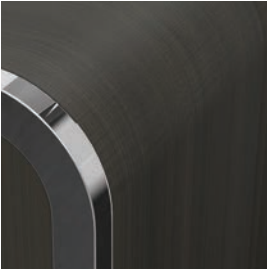
FRAME: CHROME STEEL / ALUMINIUM
BODY: VARIABLE
WOOD



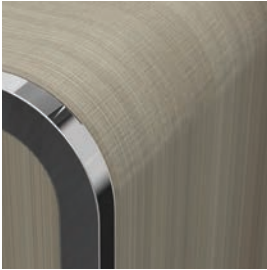
ASH-TREE



WALNUT



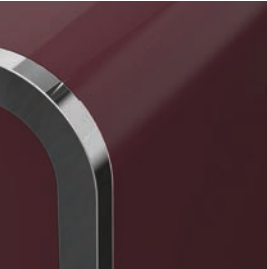
DARK OAK



LIGHT OAK

- MDF PANELS
- GLUED PLYWOOD (VENEER)
- SUSTAINABLE RAW MATERIAL
- FURTHER COLOURS AVAILABLE

METAL



BORDEAUX



BLACK MATT



GRAY



WHITE

- HIGH-QUALITY, IMPACT OF RESISTANT
- COLOUR FAST, EVEN IN PROLONGED SUNLIGHT
- GOOD HYGIENIC PROPERTIES
- SIMPLE CLEANING
- HIGH WATER RESISTANCE
- FURTHER COLOURS AVAILABLE