

# ORI

CANTILEVER FOR THE  
MODERN LIFE STYLE

## DESIGN ORI

The office chair „Ori“, conceived as a cantilever, is formally characterised by its elegant and sweeping lines. It fits gracefully into the different areas of everyday life, both in public and private areas. The seat shell adapts to the flowing lines of the frame and it thus reflects the sweeping design of „Ori“. The gap to the top between the frame and seat shell is not only a stylistic detail, but provides better utilisation. This recess now serves as a handle and facilitates the moving or adjusting of „Ori“.

The design of „Ori“ always remains prestigious through the rejuvenation, bending and stretching of the material, and the subtle connection components between the frame and seat shell.



## DIMENSIONS

total height:	820 mm
seat height:	440 mm
seat width:	420 mm
depth:	475 mm



### LOGO

THE FIDUCIAL MARK FRISINA IS EMBEDDED IN THE FRAMEWORK



### RADIAL DESIGN

RADIUS INDICATES MOMENTUM AND SIMULTANEOUSLY REAFFIRMS THE MATERIALS.

### REDUCTION

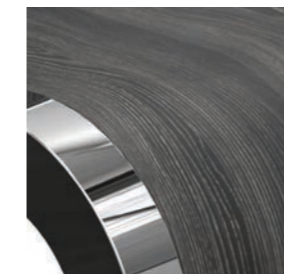
REDUCTION ALLOWS THE FRAME FORMALLY TO MERGE WITH THE GROUND

## VERSIONS

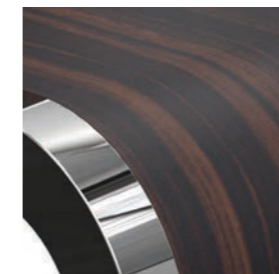
FRAME: CHROME STEEL / ALUMINIUM

SEAT SHELL: VARIABLE

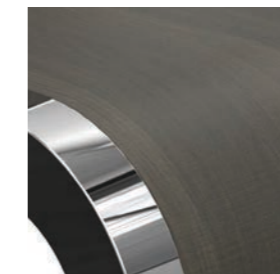
WOOD



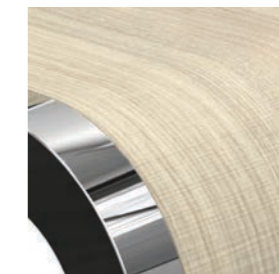
ASH-TREE



WALNUT



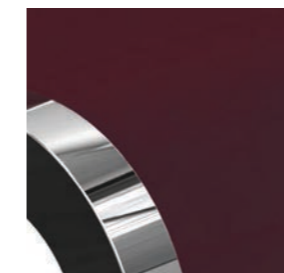
DARK OAK



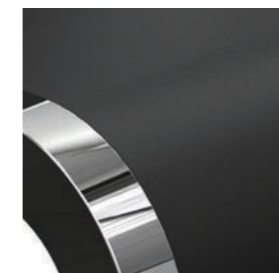
LIGHT OAK

- GLUED PLYWOOD (VENEER)
- SUSTAINABLE RAW MATERIAL
- FURTHER COLOURS AVAILABLE

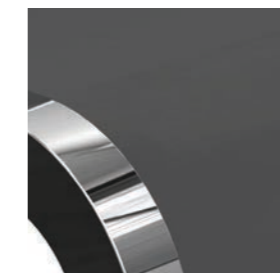
FIBREGLASS



BORDEAUX



BLACK MATT



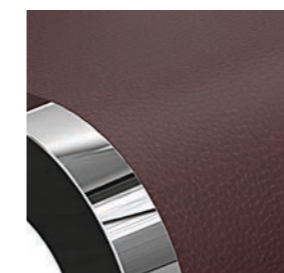
GRAY



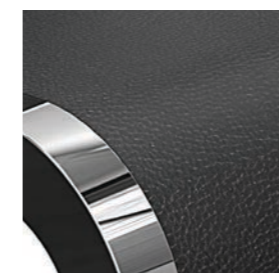
WHITE

- HIGH-QUALITY, STABLE FIBREGLASS
- COLOUR FAST, EVEN IN PROLONGED SUNLIGHT
- GOOD HYGIENIC PROPERTIES
- SIMPLE CLEANING
- HIGH WATER RESISTANCE
- FURTHER COLOURS AVAILABLE

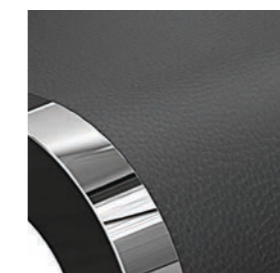
LEADER



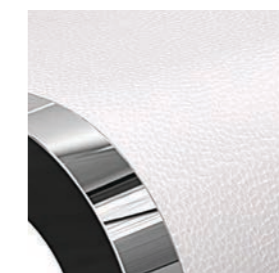
BORDEAUX



BLACK



GRAY



WHITE

- SANDWICH TECHNOLOGY, MIDDLE LAYER FIBREGLASS
- COLOUR FAST, EVEN IN PROLONGED SUNLIGHT
- EXCELLENT COMFORT
- FURTHER COLOURS AVAILABLE