

SILUETE

MOBILE WITH STYLE

DESIGN SILUETE

With „Siluete“ our „loop line“ presents an ostensible stylistic office chair for work, as well as private use. Formally this aesthetic office furniture is inspired in turn by the form of the cantilever „Ori“. From a design aspect, it is reflected not only in the frame shape, the enduring theme of the endless loop, but is particularly expressed here in the base. The individual spokes subtly integrate into the cylindrical shape of the hydraulic system and thus guarantee the visual connection to the frame.

„Adaptive components such as the castors, the arm rests and the lever for height adjustment skilfully integrate with the unmistakable lines and curves of the design of „Siluete“. The seat shell and parts of the armrests harmonise into a single unit and are available in different materials and colours. Aesthetically as well as technically, all components are skilfully interconnected and shape „Siluete“ into a dynamic office chair.



DIMENSIONS

total height:	780-930 mm
seat height:	400-550 mm
seat width:	690 mm



ARMRESTS

CONSISTING OF TWO COMPONENTS;
FRAME AND UPHOLSTERY



FLUID DESIGN

BASE DISPLAYS A FORMALLY
CLOSED FRAME,
LEVER FOR HEIGHT ADJUSTMENT,
HYDRAULIC SYSTEM

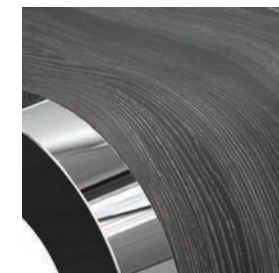


VERSIONS

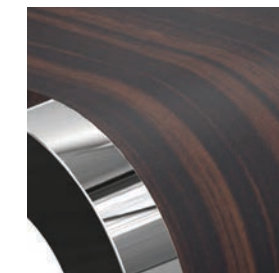
FRAME: CHROME STEEL / ALUMINIUM

SEAT SHELL: VARIABLE

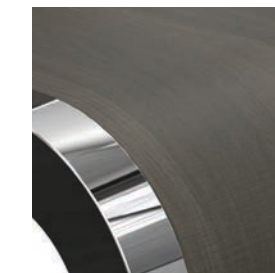
WOOD



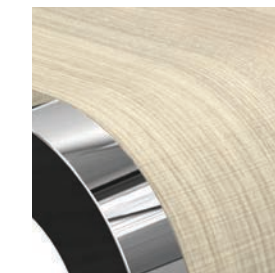
ASH-TREE



WALNUT



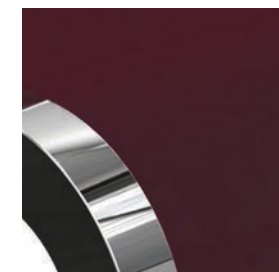
DARK OAK



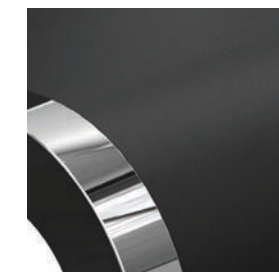
LIGHT OAK

- GLUED PLYWOOD (VENEER)
- SUSTAINABLE RAW MATERIAL
- FURTHER COLOURS AVAILABLE

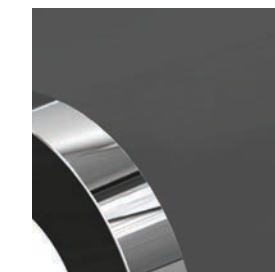
FIBREGLASS



BORDEAUX



BLACK MATT



GRAY



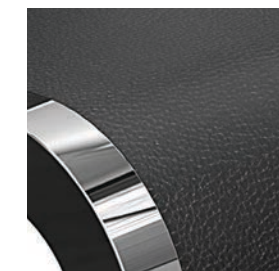
WHITE

- HIGH-QUALITY, STABLE FIBREGLASS
- COLOUR FAST, EVEN IN PROLONGED SUNLIGHT
- GOOD HYGIENIC PROPERTIES
- SIMPLE CLEANING
- HIGH WATER RESISTANCE
- FURTHER COLOURS AVAILABLE

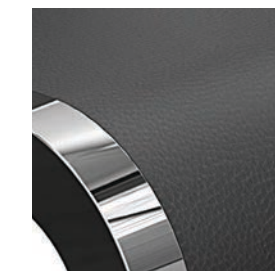
LEADER



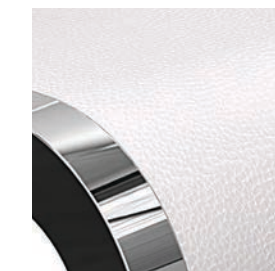
BORDEAUX



BLACK



GRAY



WHITE

- SANDWICH TECHNOLOGY, MIDDLE LAYER FIBREGLASS
- COLOUR FAST, EVEN IN PROLONGED SUNLIGHT
- EXCELLENT COMFORT
- FURTHER COLOURS AVAILABLE