

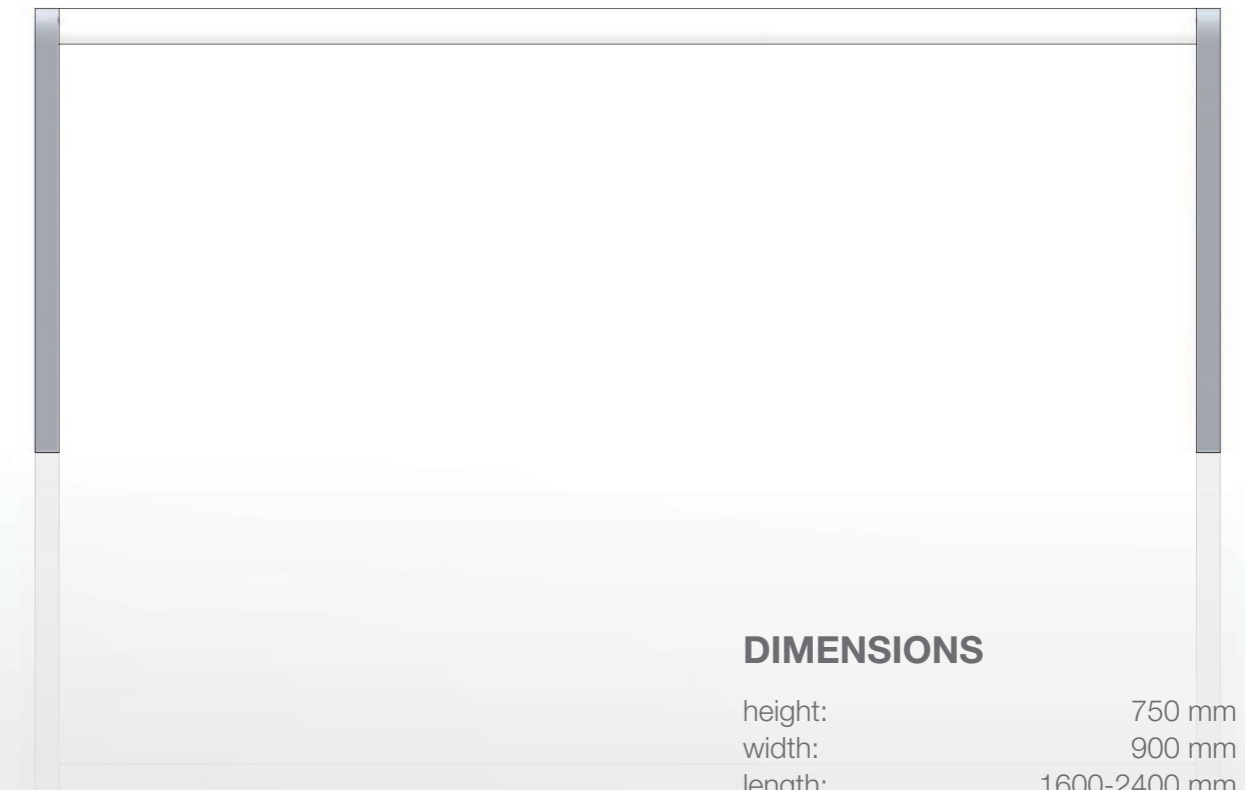
UNITE

TOGETHER AT THE TABLE

DESIGN UNITE

The „Unite“ table, as the name suggests, describes a formally enclosed design. Flat frame and table top are so closely connected that they combine visually in symbiotic harmony. The table top is available in various sizes, lengths and materials and adapts itself to the curved frame on a design and an aesthetic level. This piece of furniture is suitable for various applications in the living and working space.

The curve and finesse of the framework adapt to the materiality and shape of the table top. This is visible through the lateral curvature of the long edge of the tabletop. Not only is the elegant dynamism of the legs reflected in it, but it contributes to a significant strength of the entire material. Thus, „Unite“ is a very stable table which radiates a graceful ease.



DIMENSIONS

height:	750 mm
width:	900 mm
length:	1600-2400 mm



GLASS SUPPORT

CONSTRUCTIVE DESIGN ELEMENT,
VISIBLE IN THE GLASS TABLE



MATERIAL ADAPTATION

LONG EDGE ADAPTS THE SWEEP
OF THE LEGS



VERSIONS

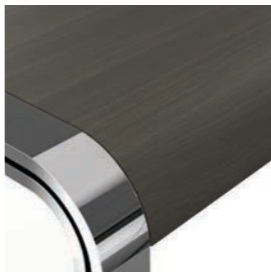
FRAME: CHROME STEEL / ALUMINIUM
TABLETOP: VARIABLE
WOOD



ASH-TREE



WALNUT

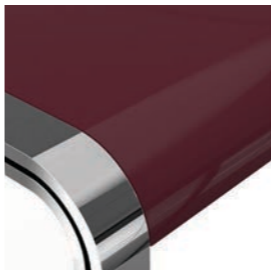


DARK OAK

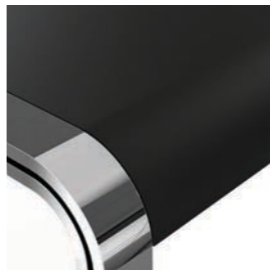


LIGHT OAK

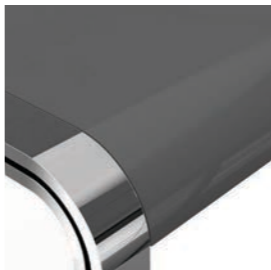
GLASS



BORDEAUX



BLACK MATT



GRAY



WHITE



TRANSPARENT



SMOKE

- GLUED PLYWOOD (VENEER)
- SUSTAINABLE RAW MATERIAL
- FURTHER COLOURS AVAILABLE

- HIGH-QUALITY, STURDY GLASS
- COLOUR FAST, EVEN IN PROLONGED SUNLIGHT
- GOOD HYGIENIC PROPERTIES
- SIMPLE CLEANING
- FURTHER COLOURS AVAILABLE