

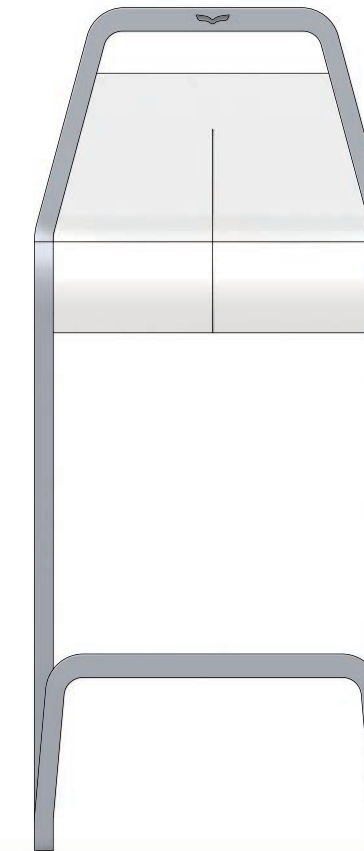
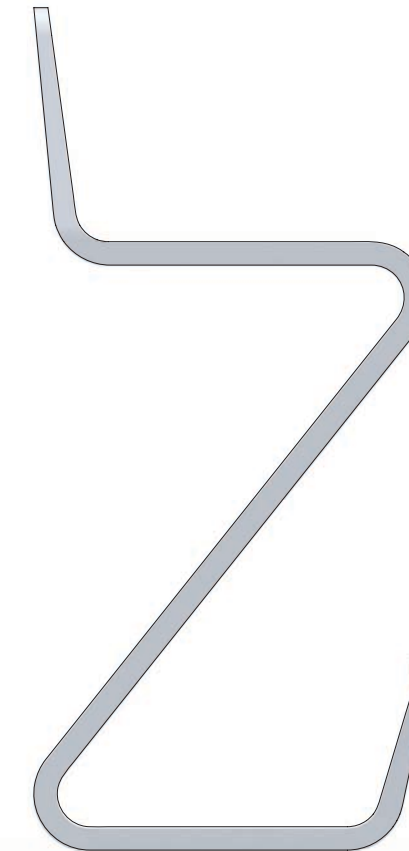
ZETTA

BAR STOOL WITH FORMAL SUPPORT

DESIGN ZETTA

The stylish bar stool „Zetta“ was created from the graphical representation of the capital Z, a slim shape, soft curves and a winding, connected frame. The sweeping frame beginning with a material reduction, skilfully integrates the seat, appearing like a flowing ribbon. The upwards angled foot-rests are formed from the juvenescent frame ends. They literally emerge from the parallel framework. Thus the „Zetta“ bar stool dispenses with any additional elements and appears in a minimalist, elegant design.

The bar stool is well suited to private use. Rather than letting guests disappear behind the table in the kitchen or at a bar it brings everyone on a comfortable level. A safe and comfortable seating experience is guaranteed by the strength of the framework and its floor grip.



DIMENSIONS

total height:	900 mm
seat height:	650 mm
seat width:	380 mm
depth:	420 mm



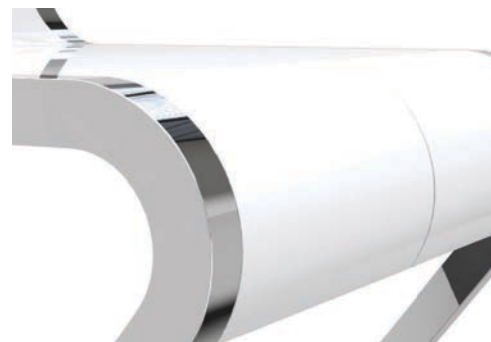
FORM

SHELL ADJUSTS TO THE
SWEEP OF THE FRAME



DYNAMIC SEATING

SEATING SHELL ADAPTS TO
DYNAMIC FRAME SHAPE

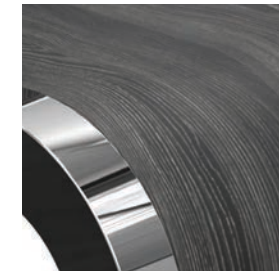


FOOTRESTS

WITHOUT INTERRUPTION; THE FRAME
SUPPORTS THE CONSTRUCTION AND
THE FEET

VERSIONS

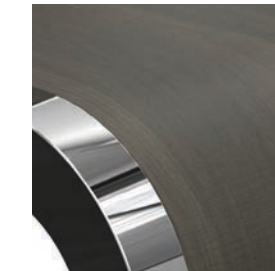
FRAME: CHROME STEEL / ALUMINIUM
SEAT SHELL: VARIABLE
WOOD



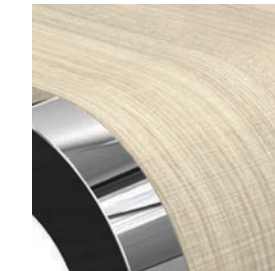
ASH-TREE



WALNUT



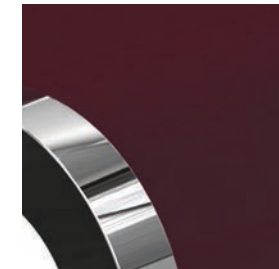
DARK OAK



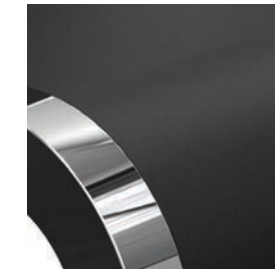
LIGHT OAK

-GLUED PLYWOOD (VENEER)
-SUSTAINABLE RAW MATERIAL
-FURTHER COLOURS AVAILABLE

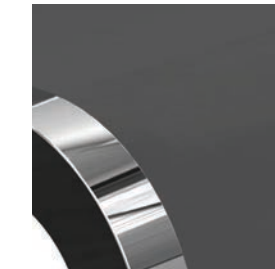
FIBREGLASS



BORDEAUX



BLACK MATT



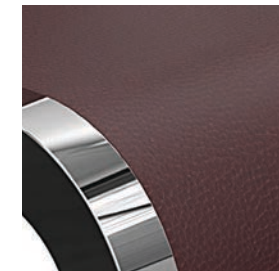
GRAY



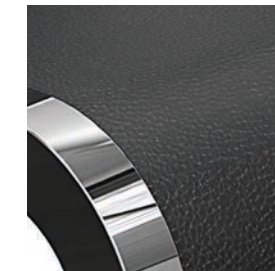
WHITE

-HIGH-QUALITY, STABLE FIBREGLASS
-COLOUR FAST, EVEN IN PROLONGED SUNLIGHT
-GOOD HYGIENIC PROPERTIES
-SIMPLE CLEANING
-HIGH WATER RESISTANCE
-FURTHER COLOURS AVAILABLE

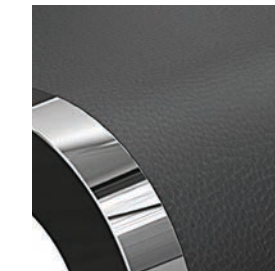
LEADER



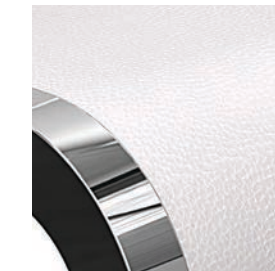
BORDEAUX



BLACK



GRAY



WHITE

-SANDWICH TECHNOLOGY, MIDDLE LAYER FIBREGLASS
-COLOUR FAST, EVEN IN PROLONGED SUNLIGHT
-EXCELLENT COMFORT
-FURTHER COLOURS AVAILABLE